



HP Designjet T1120 HD-MFP

A trusted choice for demanding professionals



Fast, versatile HP MFP for professional results

Superior copy, scan, and print results

- **Professional prints.** HP Vivera inks with the Three-black ink set produce a wide range of colors and fine detail.
- **Get the highest level of quality**—from line drawings to maps to posters—with CCD scanning technology and embedded PS.
- **Scan and archive older**—including previously folded—documents and save space.
- **Fast-drying, smudge-resistant prints.** HP Vivera inks are designed together with a range of Original HP printing materials.
- **Create stunning large-format posters that convey your message loud and clear.** For a 3 month trial period you can use the optional Serif PosterDesigner Pro for HP⁽¹⁾ with this MFP.

Performs 3 functions in 1—quickly and effectively

- **Print and scan quickly—so you're back to work fast.** Scan color documents at speeds up to 5.1 cm (2 in) per second (400 dpi Turbo mode) and black-and-white documents at up to 15.2 cm (6 in) per second (400 dpi Turbo mode). Print A1 (D)-sized documents in just up to 35 seconds per page.⁽²⁾
- **Batch scanning and printing is fast and easy with this MFP.** Printing PLT, PPT, and PDF files is fast and easy, especially with HP Instant Printing Utility 2.0, which enables single-click printing of large-format CAD/GIS output. This MFP also includes collating and nesting features even when copying.

- **Print with confidence,** knowing that prints with high levels of detail are not going to cause problems thanks to in-printer processing, including an 80 GB HDD and embedded PS.
- **Assume greater control over this MFP**—and all copy, scan, and print functions—with a range of effective management tools via the printer's embedded Web server and the accounting feature in the scanner.
- **Copy documents directly to most other HP Designjet printers thanks to preconfigured drivers in the scanner.**

Do more with a unique integrated HP solution

- **Convenient single-vendor solution—built together to work together.** Bi-directional capabilities between the printer and scanner provide built-in intelligence, enabling you to get basic printer-status information and access the printer queue.
- **Save valuable workspace with a single, integrated multifunction solution.** The HP Designjet T1120 HD-MFP is just that solution with printer, scanner, touchscreen display, keyboard, and software all bundled into one device.
- **Quickly adapt to customer changes and demands with real time preview and retouch software.** Adjust and retouch the color in scanned documents with this MFP's color management tools, including a background cleaning option.

(1) Serif PosterDesigner Pro for HP is an optional feature. Not included, sold separately.

(2) Mechanical printing time on plain media in Fast mode with Economode on.

For GIS, Enterprise, and Copy shops	Print in 35s/A1	6 colors	80 GB hard disk	Embedded PostScript®	CCD Scanning technology	Scan in 2ips color, 6ips b&w	Advanced color management options
-------------------------------------	-----------------	----------	-----------------	----------------------	-------------------------	------------------------------	-----------------------------------

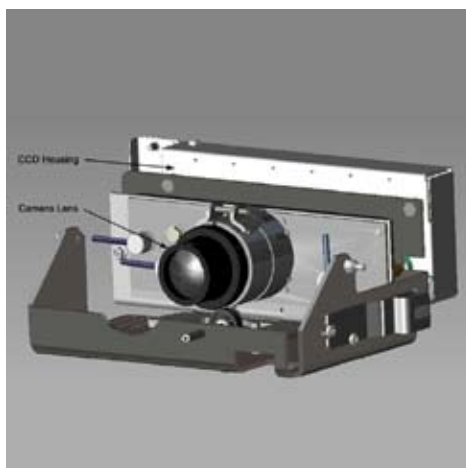
HP Designjet T1120 HD-MFP

1. Scanning speed of 5.1 cm (2 in) per second for color and 15.2 cm (6 in) per second for mono originals (400 dpi Turbo)
2. Print A1 (D)-sized documents in up to 35 seconds per page
3. 15" touchscreen graphical display for easy, intuitive operation
4. Fast, real time preview enables greater control over final output
5. DVD/CD reader/writer to save files directly to disc
6. Built-in fast image processing for excellent copy and scan performance
7. Intuitive software provides easy-to-use scanning, copying, and network printing
8. The integrated product design saves workspace
9. Print output basket for high volume batch jobs
10. High scanning quality and speeds, excellent 3D scanning capability



vivera
HP INKS

- Accurate color
- Dark blacks
- True neutral grays
- Smooth area fills
- Subtle contrasts, from the most vivid color to the softest tones



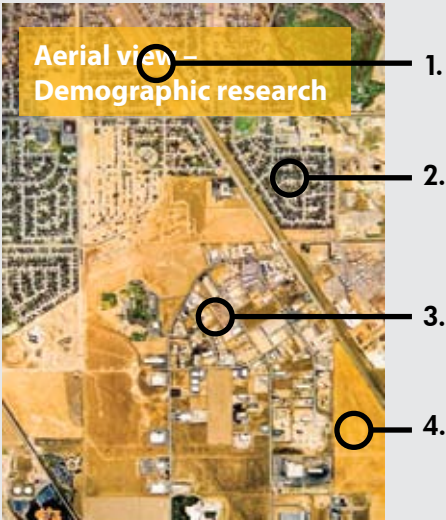
Triple 4-linear CCDs camera scanning technology

- Superior scanning quality: Color CCD technology includes three digital cameras with four arrays with RGB filters that separate color components and panchromatic BW filter to ensure superior quality on grayscale
- High application versatility
- Better results with previously folded paper
- Lower maintenance costs: modular technology, many customer-replaceable parts
- Can reach high scanning speeds thanks to powerful illumination and processing capabilities
- More tolerant to dust

A trusted choice for demanding professionals

Printing

Achieve professional prints—a wide range of color and fine details



1. Crisp text
2. Neutral grays and deep blacks
3. Uniform lines and fine detail
4. Accurate color

Copying

See impressive accuracy for any kind of original

Settings specially optimized for:

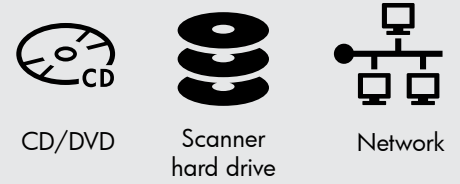
- CAD
- Map
- Brochure (line and text)
- Photo



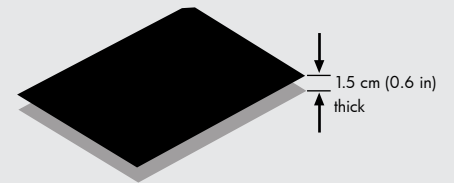
Improved quality for damaged document thanks to the background cleaning feature

Scanning

Scan to many different locations



Scan original up to 1.5 cm (0.6 in) thick



Scan to many industry standard formats



Intuitive Software



Touchscreen fast preview ensure greater control over final output



The HP Designjet T1120 HD-MFP is designed specifically for GIS customers, enterprise environments, and copy shops requiring superior quality and advanced copy, scanning, performance, and manageability features—all from one integrated device.

HP Designjet T1120 HD-MFP

Technical specifications

Print	
Print speed ³	Line drawings: 35 sec A1/D on plain media in Fast Economode, 56 A1/D per hour on plain media in Fast mode; Color images: 41 m ² /hr (445 ft ² /hr) on coated media in Fast mode, 2.8 m ² /hr (30 ft ² /hr) on glossy media in Best mode
Print resolution	Up to 2400 x 1200 optimized dpi
Margins (top x bottom x left x right)	Roll: 5 x 5 x 5 x 5 mm (0.2 x 0.2 x 0.2 x 0.2 in) (borderless on photo papers) Sheet: 5 x 16.75 x 5 x 5 mm (0.2 x 0.67 x 0.2 x 0.2 in)
Technology	HP Thermal Inkjet
Ink cartridge colors	Cyan, gray, magenta, matte black, photo black, yellow
Ink types	Dye-based (cyan, magenta, yellow, gray, photo black); pigment-based (matte black)
Ink drop	6 pl (cyan, magenta, photo black, gray), 9 pl (yellow, matte black)
Ink cartridge size	69-ml (photo black, cyan, magenta, yellow, gray) 130-ml (matte black, photo black, cyan, magenta, yellow, gray)
Minimum line width	0.06 mm (0.002 in)
Line Accuracy	+/-0.1% ⁴
Scan	
Scan speed	Color (200 dpi/400 dpi Turbo): 5.1 cm/sec (2 in/sec) Black-and-white (200 dpi/400 dpi Turbo): 15.2 cm/sec (6 in/sec)
Scan/copy resolution	Enhanced mode: 9600 x 9600 dpi with variable resolution settings from 50 dpi in increments of 1 dpi Best mode: color and black-and-white: 300 x 300 dpi Normal mode: color and black-and-white: 200 x 200 dpi Draft mode: color and black-and-white: 150 x 150 dpi
Maximum scan width	1067 mm (42 in)
Maximum scan thickness	15 mm (0.6 in)
Copy	
Reduction/enlargement	1 to 10000%
Maximum copies	1000 copies
Copier settings	Type of original, image crop and align preview, lightness, saturation and RGB controls, sharpen/blur, mirror copy, enlarge/reduce, paneling, tiling, nesting, accounting, batch
Media handling	
	Printer: Roll feed, sheet feed, automatic cutter Scanner: Sheet feed
Media types	
	Printer: bond and coated paper (bond, coated, heavyweight coated, super heavyweight plus matte, colored), technical paper (natural tracing, translucent bond, vellum), film (clear, matte, polyester), photographic paper (satin, gloss, semi-gloss, matte, high-gloss), backlit, self-adhesive (two-view cling, indoor paper, polypropylene, vinyl) Scanner: Non-abrasive paper, vellum, mylar, sepia, blueprints, plastic film, plastic laminate, foam board, cardboard. (No plywood, stone plates, metal plates or abrasive, dirty, rough, sharp edged, metal clamped, burned surfaces, transparencies.)
Processing and memory	
	Printer: Intel® Centrino® mobile 600 MHz, 384 MB memory, 80 GB hard disk Scanner: Intel Pentium® 4 2.8 GHz, 1 GB memory, 40 GB hard disk
Connectivity	
Interfaces (standard)	Printer: 1 Gigabit Ethernet (1000Base-T) port, 1 Hi-Speed USB 2.0 certified port, 1 EIO Jetdirect accessory slot Scanner: 1 Gigabit Ethernet (1000Base-T) port, 1 FireWire® (IEEE1394a compliant) port
Print languages	Adobe® PostScript® 3™, Adobe PDF 1.6, HP-GL/2, HP-RTL, CALS G4, TIFF, JPEG, HP PCL 3 GUI
Drivers (included)	HP-GL/2, HP-RTL, PostScript drivers for Windows® (optimized for AutoCAD 2000 and higher); HP PCL 3 GUI, PostScript drivers for Mac OS X; support for Citrix XenApp and Citrix XenServer environments
<small>(3 Mechanical printing time (4 ±0.1% of the specified vector length or ±0.1 mm (whichever greater) at 23° C (73° F), 50-60% relative humidity, on E/A0 printing material in Best or Normal mode with HP Matte Film</small>	
Environmental ranges	
Operating temperature	5 to 40° C (41 to 104° F)
Recommended operating temperature	18 to 32° C (64 to 90° F) (depending on paper type)
Storage temperature	-20 to 55° C (-4 to 131° F)
Operating humidity	20 to 80% RH
Acoustic	
Sound pressure, active	55 dB(A)
Sound pressure, standby	42 dB(A)
Sound power, active	6.9 B(A)
Sound power, standby	5.8 B(A)
Power consumption	
Maximum	330 watts
Powersave	44.4 watts
Off	1.69 watts
Power requirements	Input voltage (auto ranging): 100 to 240 VAC (+/- 10%), 50/60 Hz (+/- 3 Hz), 2 A max
Certification	
Safety	USA and Canada (CSA certified), EU (LVD and EN60950-1 compliant), Russia (GOST), Singapore (PSB), China (CCC), Argentina (IRAM), Mexico (NYCE), Korea (KETI)
Electromagnetic	Compliance for Class A ITE products: EU (EMC Directive), USA (FCC Rules), Canada (ICES), Australia (ACA), New Zealand (MoC), China (CCC), Japan (VCCI); Certified as Class A product: Korea (MIC), Taiwan (BSMI)
Environmental	EU & China RoHS, WEEE, REACH, EuP
Warranty	
	One-year limited hardware warranty
Service and support	
Care packs	H4518E HP Network Installation UH467E HP 3y Next Business Day Onsite UH468E HP 4y Next Business Day Onsite UKS20PE HP 1y Post Warranty Next Business Day Onsite UH470E HP 3 year 4 hour 13X5 UH478PE HP 1 year Post Warranty 4 hour 13X5

Dimensions (w x d x h)	
MFP	1900 x 1000 x 1600 mm (74.8 x 39.4 x 63.0 in)
Shipping	1970 x 790 x 1450 mm (77.6 x 31.1 x 57.1 in)
Weight	
MFP	200 kg (440 lb)
Shipping	278 kg (612 lb)

What's in the box

Printer, printheads (3 x 2 colors each), introductory ink cartridges, 44-in stand, quick reference guide, setup poster, Serif PosterDesigner Pro poster, start-up software, scanner, touchscreen (panel PC), keyboard, scanner documentation CD, system recovery DVD, customer service guide, USB cable, FireWire cable, Ethernet cable, power cords

Ordering information

Product	HP Designjet T1120 HD-MFP
Accessories	Q6709A HP Designjet T11x0/T610 44-in Spindle J7977G HP Jetdirect 630n IPv6 Gigabit Print Server J7961G HP Jetdirect 635n IPv6/JPsec Print Server CN088A Serif PosterDesigner Pro for HP
Original HP printheads	C9380A HP 72 Gray and Photo Black Printhead C9383A HP 72 Magenta and Cyan Printhead C9384A HP 72 Matte Black and Yellow Printhead
Original HP ink cartridges with HP Vivera inks	C9397A HP 72 69-ml Photo Black Ink Cartridge C9398A HP 72 69-ml Cyan Ink Cartridge C9399A HP 72 69-ml Magenta Ink Cartridge C9400A HP 72 69-ml Yellow Ink Cartridge C9401A HP 72 69-ml Gray Ink Cartridge C9403A HP 72 130-ml Matte Black Ink Cartridge C9370A HP 72 130-ml Photo Black Ink Cartridge C9371A HP 72 130-ml Cyan Ink Cartridge C9372A HP 72 130-ml Magenta Ink Cartridge C9373A HP 72 130-ml Yellow Ink Cartridge C9374A HP 72 130-ml Gray Ink Cartridge
Original HP large-format printing materials	Q6627A HP Super Heavyweight Plus Matte Paper 210 g/m ² , 36 in. x 100 ft/914 mm x 30.5 m Q6628A HP Super Heavyweight Plus Matte Paper 210 g/m ² , 42 in. x 100 ft/1067 mm x 30.5 m C6030C HP Heavyweight Coated Paper 131 g/m ² , 36 in. x 100 ft/914 mm x 30.5 m C6569C HP Heavyweight Coated Paper 131 g/m ² , 42 in. x 100 ft/1067 mm x 30.5 m Q1956A HP Heavyweight Coated Paper 131 g/m ² , 42 in. x 225 ft/1067 mm x 67.5 m (NA & EMEA only) C6019B HP Coated Paper 90 g/m ² , 24 in. x 150 ft/610 mm x 45.7 m C6020B HP Coated Paper 90 g/m ² , 36 in. x 150 ft/914 mm x 45.7 m C6980A HP Coated Paper 90 g/m ² , 36 in. x 300 ft/914 mm x 91.4 m C1860A HP Bright White Inkjet Paper 90 g/m ² , 24 in. x 150 ft/610 mm x 45.7 m (NA & LAR only) C6035A HP Bright White Inkjet Paper 90 g/m ² , 24 in. x 150 ft/610 mm x 45.7 m (EMEA & AP only) C1861A HP Bright White Inkjet Paper 90 g/m ² , 36 in. x 150 ft/914 mm x 45.7 m (NA & LAR only) C6036A HP Bright White Inkjet Paper 90 g/m ² , 36 in. x 150 ft/914 mm x 45.7 m (EMEA & AP only) C6810A HP Bright White Inkjet Paper 90 g/m ² , 36 in. x 300 ft/914 mm x 91.4 m Q1397A HP Universal Bond Paper 80 g/m ² , 36 in. x 150 ft/914 mm x 45.7 m C3868A HP Natural Tracing Paper 90 g/m ² , 36 in. x 150 ft/914 mm x 45.7 m C3875A HP Clear Film 174 g/m ² , 36 in. x 75 ft/914 mm x 22.9 m 51642B HP Matte Film 160 g/m ² , 36 in. x 125 ft/914 mm x 38.1 m Q1427A HP Universal Highglass Photo Paper 190 g/m ² , 36 in. x 100 ft/914 mm x 30.5 m (NA, EMEA, AP only) Q1421A HP Universal Semigloss Photo Paper 190 g/m ² , 36 in. x 100 ft/914 mm x 30.5 m (NA, EMEA, AP only) CG459A HP Premium Matte Photo Paper 210 g/m ² , 24 in. x 100 ft/610 mm x 30.5 m CG460A HP Premium Matte Photo Paper 210 g/m ² , 36 in. x 100 ft/914 mm x 30.5 m C7960A HP Reverse Print Matte Backlit Film 160 g/m ² , 36 in. x 75 ft/914 mm x 22.9 m (NA, EMEA, AP only) Q8834A HP Self-adhesive Glass Polypropylene 120 g/m ² , 36 in. x 75 ft/914 mm x 22.9 m Q1442A HP Coated Paper 90 g/m ² , (A1) 23.39 in. x 150 ft/594 mm x 45.7 m (EMEA & JP only) Q1445A HP Bright White Inkjet Paper 90 g/m ² , (A1) 23.39 in. x 150 ft/594 mm x 45.7 m (EMEA & JP only) CG886A HP Coddlefree Heavyweight Coated Paper 170 g/m ² , 24 in. x 100 ft/610 mm x 30.5 m (US & EMEA only) CG887A HP Coddlefree Heavyweight Coated Paper 170 g/m ² , 36 in. x 100 ft/914 mm x 30.5 m (US & EMEA only) CG888A HP Coddlefree Heavyweight Coated Paper 170 g/m ² , 42 in. x 100 ft/1067 mm x 30.5 m (US & EMEA only) CG883A HP Coddlefree Coated Paper 100 g/m ² , 24 in. x 150 ft/610 mm x 45.7 m (US & EMEA only) CG884A HP Coddlefree Coated Paper 100 g/m ² , 36 in. x 150 ft/914 mm x 45.7 m (US & EMEA only) CG885A HP Coddlefree Coated Paper 100 g/m ² , 42 in. x 150 ft/1067 mm x 45.7 m (US & EMEA only) CG889A HP Recycled Bond Paper 80 g/m ² , 24 in. x 150 ft/610 mm x 45.7 m (US & EMEA only) CG890A HP Recycled Bond Paper 80 g/m ² , 36 in. x 150 ft/914 mm x 45.7 m (US & EMEA only) CG891A HP Recycled Bond Paper 80 g/m ² , 42 in. x 150 ft/1067 mm x 45.7 m (US & EMEA only) CG892A HP Recycled Bond Paper 80 g/m ² , (A2) 16.54 in. x 150 ft/420 mm x 45.7 m (US & EMEA only)

More HP large-format printing material sizes and weights available at: www.hp.com/go/designjet/supplies



© Copyright 2007, 2009 Hewlett-Packard Development Company, LP. The information contained herein is subject to change without notice. The only warranties for HP products and services are set forth in the express warranty statements accompanying such products and services. Nothing herein should be construed as constituting an additional warranty. HP shall not be liable for technical or editorial errors or omissions contained herein. Intel, Pentium, and Intel Centrino are trademarks of Intel Corporation in the U.S. and other countries. Windows is a U.S. registered trademark of Microsoft Corporation. FireWire is a trademark of Apple Computer, Inc., registered in the U.S. and other countries. Adobe, PostScript, and Adobe PostScript 3 are trademarks of Adobe Systems Incorporated.

For more information, visit our website at:
www.hp.com/go/designjetT1120HD-MFP

